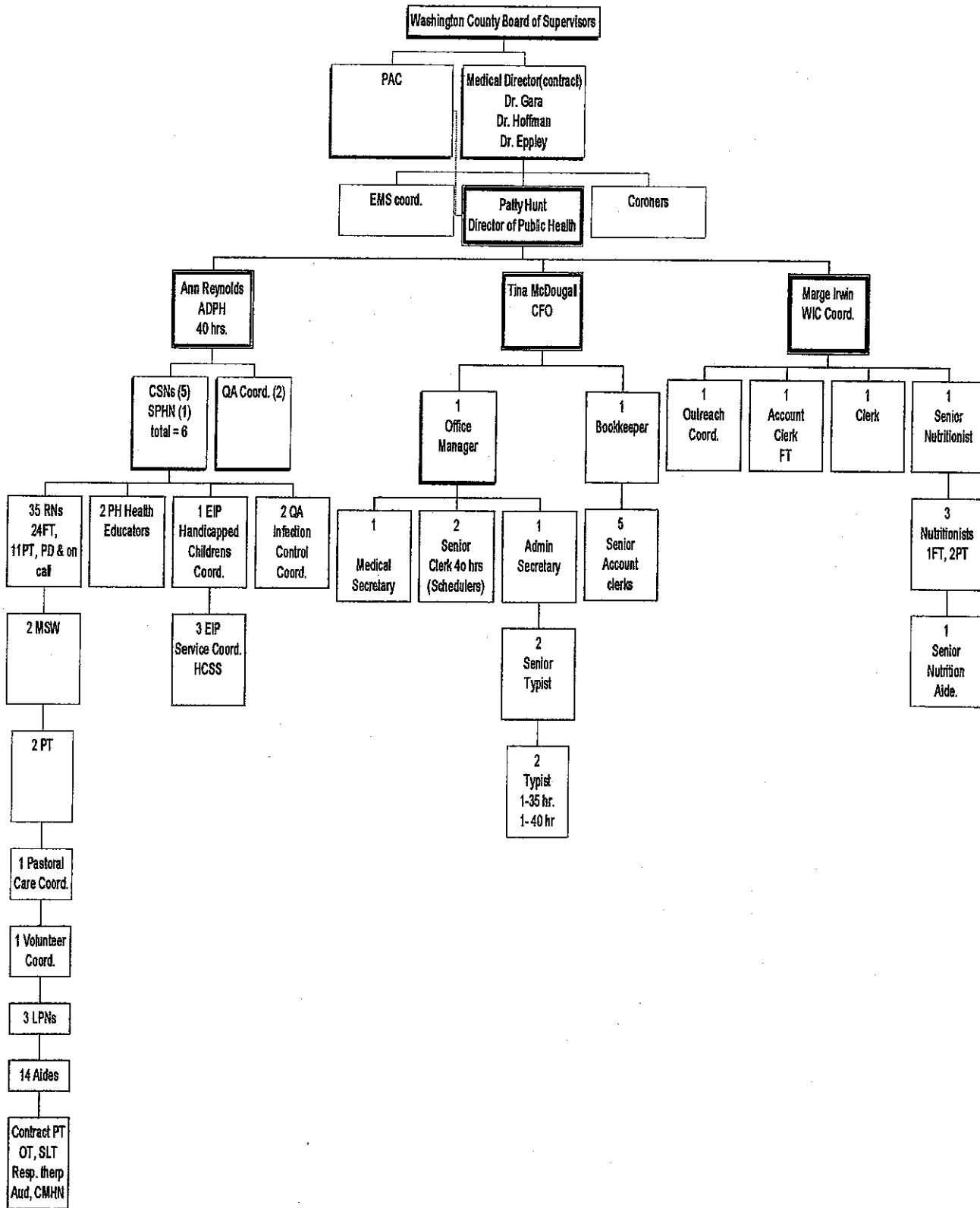


WASHINGTON COUNTY PUBLIC HEALTH NURSING SERVICE ORGANIZATIONAL CHART
As of March 11, 2009



STAFFING PATTERN

GENERAL FUND DEPARTMENT CIVIL SERVICE TITLE PUBLIC HEALTH Director of Public Health	HOURS	CHANGES in 2008		2008 FINAL		CHANGES in 2009	# net	2009 AS AMENDED		Requested 2010 Changes	2010 Request			
		#	net	FT	PT			TOTAL	FT		PT	TOTAL		
Assistant Director of Patient Svcs	35			1	0	1		1	0	1	1	0	1	
Account Clerk	40			2	0	2	one removed	1	0	1	1	0	1	
Account Clerk WIC	35			1	0	1	upgrade	1	0	0	0	0	0	
Account Clerk Part time Temp	varies			0	1	1	Move 1 to Full Time WIC	1	0	1	1	0	1	
Administrative Secretary	10													
Bookkeeper	35			3	0	3		3	0	3	1	0	1	
Clerk	35			2	0	2		2	0	2	1	0	1	
Early Intervention Services Coordinat	35			2	0	2		3	0	3	1	0	1	
Fiscal Officer	35			1	0	1	Remove for 2009 9/10/09	0	0	0	0	0	0	
Handicapped Childrens' Coordinat	35			1	0	1		1	0	1	1	0	1	
Handicapped Childrens' Services S	35			2	0	2	Add one instead of EI Coord 9/10/09	3	0	3	1	0	1	
Home Health Aide, FT	35			16	0	16		16	0	16	14	0	14	
Hospice Volunteer Coordinator	35			1	0	1		1	0	1	1	0	1	
Infection Control Coordinator	37.5			1	0	1		1	0	1	1	0	1	
LPN, Hospice	35			5	0	5	one removed	4	0	4	Removed 1, replaced with RV	1	0	1
Medical Director	varies			0	2	2		0	2	2	3	0	3	
Medical Secretary	35							1	0	1	To Contractual for 2010	0	0	0
Medical Typist (aka Typist)	35/40			3	0	3	Promotion to Senior	2	0	2	Title Change from Admin Sec	1	0	1
MSW, FT	37.5			2	0	2		2	0	2	amson is a typist; removed one	2	0	2
Office Manager	35			0	0	0	former p-act clerk - res # 350	1	0	1		1	0	1
Pastoral Care Coordinator	35			1	0	1		1	0	1		1	0	1
Physical Therapist	40			2	0	2		2	0	2		2	0	2
Principal Account Clerk	35			1	0	1	replace w/ office mgr - res #350	1	0	1		0	0	0
Public Health Educator	35			2	0	2		2	0	2		2	0	2
Quality Assurance Coordinator	37.5			2	0	2		2	0	2		2	0	2
RN Infection Control Coordinator	37.5			1	0	1		1	0	1		1	0	1
RN, PHN (all types FT)	37.5			26	0	26		26	0	26	Removed 2 for 2010	24	0	24
RN, PHN (all types per diem, on c	35			0	12	12		0	12	12	Removed 1 for 2010	0	11	11
Senior Account Clerk	35			4	0	4	from acct clerk	1	5	5	placed Bookkeeper with Senior	5	0	5
Senior Clerk	35			1	0	1	added one	1	2	2		2	0	2
Senior Typist	35			1	0	1		2	0	2		2	0	2
Senior WIC Nutrition Aide	35			1	0	1		1	0	1		1	0	1
Senior WIC Program Nutritionist F	35			1	0	1		1	0	1		1	0	1
Supervisor, PHN & Supervisor, CH	37.5			6	0	6		7	0	7	Removed 1 for 2010	6	0	6
WIC Nutritionist	35			0	3	3	added one	1	2	3		1	2	3
WIC Nutrition Aide PT	14			1	0	1	1 Part time to Full Time 10/7/09	1	0	1	Removed	0	0	0
WIC Outreach Assistant	35			1	0	1	Hold off to see if needed	1	0	1		1	0	1
WIC Program Coordinator	35			1	0	1		1	0	1		1	0	1
Public Health TOTAL				95	18	113		99	17	116		98	13	101

titles in alphabetical order